

Acton CE / Calveley Primary Academies



Supporting Children with Medical Needs Policy

Confirmation that the Supporting Children with Medical Needs Policy has been discussed and approved by the Staff and Board of Directors.

October 2018

To be reviewed October 2020

Acton CE / Calveley Primary Academies
Supporting pupils with medical conditions policy

This policy is written in line with the requirements of:

Children and Families Act 2014 - section 100

Supporting pupils at school with medical conditions: statutory guidance for governing bodies of maintained schools and proprietors of academies in England, DfE Sept 2014

0-25 SEND Code of Practice, DfE 2015

Mental Health and behaviour in schools: departmental advice for school staff, DfE June 2014

Equalities Act 2010

Schools Admissions Code, DfE 1 Feb 2010

This policy should be read in conjunction with the following school policies:

SEN Policy / SEN Information Report, Safeguarding Policy, Educational Visits Policy, Complaints Policy.

Definitions of medical Conditions:

Pupils' medical needs may be broadly summarised as being of two types:

Short-term affecting their participation at school because they are on a course of medication

Long-term potentially limiting access to education and requiring on-going support, medicines or care whilst at school to help them to manage their condition and keep them well, including monitoring and intervention in emergency circumstances. It is important that parents feel confident that the school will provide effective support for their child's medical condition and that the pupils feel safe.

Some children with medical conditions may be considered disabled. Where this is the case our governing bodies will comply with their duties under the Equality Act 2010. Some may also have special educational needs (SEN) and may have a statement or Education, Health and Care Plan (EHCP). Where this is the case this policy should be read in conjunction with the 0-25 SEND Code of Practice and the school's SEN Policy and SEN Information Report.

The statutory duty of the Board of Directors

The Board of Directors remain legally responsible and accountable for fulfilling their statutory duty for supporting pupils at school with medical conditions. The Directors of the RLLAT fulfil this by:

- Ensuring that arrangements are in place to support pupils with medical conditions. In doing so we will ensure that such children can access and enjoy the same opportunities at school as any other child;
- Taking into account that some medical conditions that require support at school will affect quality of life and may be life-threatening. Some will be more obvious than others and therefore the focus is on the needs of each individual child and how their medical condition impacts on their school life;

- Ensuring that the arrangements give parents and pupils confidence in the school's ability to provide effective support for the medical condition, showing the school's understanding of how a medical condition can impact on a child's ability to learn. We will ensure that staff are properly trained to provide the support that any pupil needs;
- Ensuring that no child with a medical condition is denied admission, or prevented from taking up a place in school because arrangements for their medical condition have not been made. However, in line with safeguarding duties, we will ensure that pupils' health is not put at unnecessary risk from, for example, infectious diseases, and reserve the right to refuse admittance to a child at times where it would be detrimental to the health of that child or others to do so;
- Ensuring that the arrangements put in place are sufficient to meet our statutory duties and ensure that policies, plans, procedures and systems are properly and effectively implemented;
- Considering whether to:
 - develop transport healthcare plans in conjunction with the LA for pupils with life-threatening conditions who use home- to- school transport
 - Purchase and train staff in the use of defibrillators
- Ensuring that the appropriate level of insurance is in place and appropriate to the level of risk.

Policy implementation

The statutory duty for making arrangements for supporting pupils at school with medical conditions rests with the Board of Directors. The Directors have delegated the following functions of the implementation of this policy to the staff below however, the Directors remain legally responsible and accountable for fulfilling their statutory duty.

The overall responsibility for the implementation of this policy is delegated to the Executive Headteacher or in her absence the Head of School. She will also be responsible for ensuring that sufficient staff are suitably trained and will ensure cover arrangements in cases of staff absences or staff turnover to ensure that someone is always available and on-site with an appropriate level of training.

The Head of School & SENCO will be responsible for briefing supply teachers, preparing risk assessments for school visits and other school activities outside of the normal timetable and for the monitoring of individual healthcare plans. They will be responsible in conjunction with parents/carers, for drawing up, implementing and keeping under review the individual healthcare plan for each pupil and making sure relevant staff are aware of these plans.

All members of staff are expected to show a commitment and awareness of children's medical conditions and the expectations of this policy. All new members of staff will be inducted into the arrangements and guidelines in this policy upon taking up their post.

Procedure to be followed when notification is received that a pupil has a medical condition

This covers notification prior to admission, procedures to cover transitional arrangements between schools or alternative providers and the process to be followed upon reintegration after a period of absence or when a pupil's need changes. For children being admitted to Acton or Calveley Academies for the first time with good notification given, the arrangements will be in place for the start of the relevant school term. In other cases, such as a new diagnosis or a child moving to the schools mid-term, we will make every effort to ensure that arrangements are put in place within two weeks.

In making the arrangements, we will take into account that many of the medical conditions that require support at school will affect quality of life and may be life-threatening. We also acknowledge that some may be more obvious than others. We will therefore ensure that the focus is on the needs of each individual child and how their medical condition impacts on their school life. We aim to ensure that parents/carers and pupils can have confidence in our ability to provide effective support for medical conditions in school, so the arrangements will show an understanding of how medical conditions impact on the child's ability to learn.

We will ensure that staff are properly trained and supervised to support pupils' medical conditions and will be clear and unambiguous about the need to support actively pupils with medical conditions to participate in school trips and visits, or in sporting activities, and not prevent them in doing so. We will make arrangements for the inclusion of pupils in such activities with any adjustments as required unless evidence from a clinician such as a GP states that this is not possible. We will make sure that no child with a medical condition is denied admission or prevented from attending the school because arrangements for supporting their medical condition have not been made. However, in line with our safeguarding duties, we will ensure that all pupils' health is not put at unnecessary risk from, for example infectious disease. We will therefore not accept a child in school at times where it would be detrimental to the health of that child or others.

Acton and Calveley Academies do not have to wait for a formal diagnosis before providing support to pupils. In cases where a pupil's medical condition is unclear, or where there is a difference of opinion, judgements will be needed about what support to provide based on available evidence. This would normally involve some form of medical evidence and consultation with parents/carers. Where evidence conflicts, some degree of challenge may be necessary to ensure that the right support can be put in place. These discussions will be led by the SENCO and following these discussions, an individual healthcare plan may be written in conjunction with the parent/carers.

Individual healthcare plans

Individual healthcare plans will help to ensure that Acton and Calveley effectively support pupils with medical conditions. They will provide clarity about what needs to be done, when and by whom. They may be essential, such as in cases where conditions fluctuate or where there is a high risk that emergency intervention will be needed. They are likely to be helpful in the majority of other cases too, especially where medical conditions are long-term and complex. However, not all children will require one. The school, healthcare professional and parent/carer should agree, based on evidence, when a healthcare plan would be inappropriate or disproportionate. If consensus cannot be reached the Executive Headteacher is best placed to take a final view. A flow chart for identifying and agreeing the support a child needs and developing an individual healthcare plan is provided at

Annex A.

Individual healthcare plans will be easily accessible to all who need to refer to them, while preserving confidentiality. Plans will capture the key information and actions that are required to support the child effectively. The level of detail within the plan will depend on the complexity of the child's condition and the degree of support needed. This is important because different children with the same health condition may require very different support. Where a child has SEN, but does not have a statement or EHC plan, their special educational needs should be mentioned in their individual healthcare plan.

Individual healthcare plans (and their review) should be drawn up in partnership between the school, parents/carers and a relevant healthcare professional e.g. school, specialist or children's community nurse, who can best advise on the particular needs of the child. Pupils should also be involved whenever appropriate. The aim should be to capture the steps which the schools should take to help manage their condition and overcome any potential barriers to getting the most from their education. Partners should agree who will take the lead in writing the plan, but responsibility for ensuring it is finalised and implemented rests with the school.

Acton and Calveley Academies will ensure that individual healthcare plans are reviewed at least annually or earlier if evidence is presented that the child's needs have changed. They will be developed and reviewed with the child's best interests in mind and ensure that the schools assess and manage risks to the child's education, health and social wellbeing, and minimise disruption. Where a child is returning to school following a period of hospital education or alternative provision, we will work with the Local Authority and education provider to ensure that the individual healthcare plan identifies the support the child will need to reintegrate effectively.

Template A provides a basic template for the individual healthcare plan, and although this format may be varied to suit the specific needs of each pupil, they should all include the following information:

- The medical condition, its triggers, signs, symptoms and treatments;
- The pupil's resulting needs, including medication (dose, side effects and storage) and other treatments, time, facilities, equipment, testing, access to food and drink where this is used to manage their condition, dietary requirements and environmental issues e.g. crowded corridors, travel time between lessons;
- Specific support for the pupil's educational, social and emotional needs - for example, how absences will be managed, requirements for extra time to complete exams, use of rest periods or additional support in catching up with lessons, counselling sessions;
- The level of support needed (some children will be able to take responsibility for their own health needs) including in emergencies. If a child is self-managing their medication, this should be clearly stated with appropriate arrangements for monitoring;

Real Life Learning Academy Trust

- Who will provide this support, their training needs, expectations of their role and confirmation of proficiency to provide support for the child's medical condition from a healthcare professional and cover arrangements for when they are unavailable;
- Who in the school needs to be aware of the child's condition and the support required;
- Arrangements for written permission from parents/carer and the Executive Headteacher, for medication to be administered by a member of staff, or self-administered by the pupil during school hours;
- Separate arrangements or procedures required for school trips or other school activities outside of the normal school timetable that will ensure the child can participate e.g. risk assessment;
- Where confidentiality issues are raised by the parent/child, the designated individual to be entrusted with information about the child's condition; and
- What to do in an emergency, including whom to contact, and contingency arrangements. Some children may have an emergency healthcare plan prepared by their lead clinician that could be used to inform development of their individual healthcare plan.

Roles and responsibilities

In addition to our nominated staff, we can: refer to the Community Nursing Team for support with drawing up Individual Healthcare Plans; provide or commission specialist medical training; liaise with lead clinicians to seek advice or support in relation to pupils with medical conditions.

Other healthcare professionals, including GPs and paediatricians should notify the Community Nursing Team when a child has been identified as having a medical condition that will require support at school. Specialist local health teams may be able to provide support, and training to staff, for children with particular conditions (e.g. asthma, diabetes, epilepsy).

Pupils with medical conditions will often be best placed to provide information about how their condition affects them. They should be fully involved in discussions about their medical support needs and contribute as much as possible to the development of their individual healthcare plan. Other pupils will often be sensitive to the needs of those with medical conditions and can, for example, alert staff to the deteriorating condition or emergency need of pupils with medical conditions.

Parents/carers should provide the school with sufficient and up-to-date information about their child's medical needs. They may in some cases be the first to notify the school that their child has a medical condition. Parents are key partners and should be involved in the development and review of their child's individual healthcare plan and may be involved in its drafting. They should carry out any action they have agreed to as part of its implementation, e.g. provide medicines and equipment and ensure they or another nominated adult are contactable at all times.

Providers of health services should co-operate with schools that are supporting children with medical conditions. They can provide valuable support, information, advice and guidance to schools, and their staff, to support children with medical conditions at school.

Staff training and support

The schools review their first aid training on a regular basis, but at least annually. There are named full first aiders within the schools and paediatric first aiders.

Template D will be used to record staff training for administration of medicines and /or medical procedures.

All staff who are required to provide support to pupils for medical conditions will be trained, where relevant by healthcare professionals, qualified to do so. The training need will be identified by the healthcare professional during the development or review of the individual healthcare plan. We may choose to arrange training ourselves and will ensure that it remains up-to-date.

Training will be sufficient to ensure that staff are competent and have confidence in their ability to support pupils with medical conditions and to fulfil the requirements set out in the individual healthcare plans. They will need an understanding of the specific medical conditions they are being asked to deal with, their implications and preventative measures.

All staff will receive induction training and regular whole school awareness training so that all staff are aware of the school's policy for supporting pupils with medical conditions and their role in implementing the policy. The Executive Headteacher/SENCO, will seek advice from relevant healthcare professions about training needs, including preventative and emergency measures so that staff can recognise and act quickly when a problem occurs.

The family of a child will often be key in providing relevant information to school staff about how their child's needs can be met, and parents will be asked for their views. They should provide specific advice, but should not be the sole trainer.

The child's role in managing their own medical needs

If, after discussion with the parent/carer, it is agreed that the child is competent to manage his/her own medication and procedures, s/he will be encouraged to do so. This will be reflected in the individual healthcare plan.

Wherever possible, children will be allowed to carry their own medicines and relevant devices or should be able to access their medication for self-medication quickly and easily; these will be stored in the cupboard in the school offices or in the staffroom fridge, if required, to ensure that the safeguarding of other children is not compromised. We also recognise that children who take their medicines themselves and/or manage procedures may require an appropriate level of supervision. If it is not appropriate for a child to self-manage, then relevant staff will help to administer medicines and manage procedures for them.

If a child refuses to take medicine or carry out a necessary procedure, staff should not force them to do so, but follow the procedure agreed in the individual healthcare plan. Parents will be informed so that alternative options can be considered.

Managing medicines on school premises and record keeping

At Acton and Calveley Schools, the following procedures are to be followed:

- Medicines should only be administered at school when it would be detrimental to a child's health or school attendance not to do so;
- No child under 16 should be given prescription or non-prescription medicines without their parents written consent (see template B) - except in exceptional circumstances where the medicine has been prescribed to the child without the knowledge of the parents. In such cases, every effort should be made to encourage the child or young person to involve their parents while respecting their right to confidentiality;

Non-prescribed medicines will not be administered on school premises;

- Where clinically possible, medicines should be prescribed in dose frequencies which enable them to be taken outside school hours;
- Acton/Calveley will only accept prescribed medicines, with written permission from parent/carer that are in-date, labelled, provided in the original container as dispense a pharmacist and include instructions for administration, dosage and storage. The exception to this is insulin which must be in-date, but will generally be available to schools inside an insulin pen or a pump, rather than its original container;
- All medicines will be stored safely in either the school offices or staffrooms if refrigeration is required. Children should know where their medicines are at all times and be able to access them immediately. Where relevant, they should know who to speak to if required.
- Medicines and devices such as asthma inhalers, blood glucose testing meters and adrenaline pens should be always readily available and not locked away. Asthma inhalers should be marked with the child's name.
- During school trips the first aid trained member of staff will carry all medical devices and medicines required;
- A child who had been prescribed a controlled drug may legally have it in their possession if they are competent to do so, but passing it to another child for use is an offence. Monitoring arrangements may be necessary. Otherwise we will keep all controlled drugs that have been prescribed for a pupil securely stored in a non-portable container and only named staff will have access. Controlled drugs should be easily accessible in an emergency. A record will be kept of any doses used and the amount of the controlled drug held in the school;
- Staff administering medicines should do so in accordance with the prescriber's instructions. Acton/Calveley will keep a record (see Template C) of all medicines administered to individual children, stating what, how and how much was administered, when and by whom. Any side effects of medication administered at school will be noted. Written records are kept of all medicines administered to

children. These records offer protection to staff and children and provide evidence that agreed procedures have been followed;

- When no longer required, medicines should be returned to the parent/carer to arrange safe disposal. Sharps boxes should always be used for the disposal of needles and other sharps.

Time out of school for medical appointments

At Acton and Calveley Schools, and as per the Attendance Policy, children missing registration for a medical or dental appointment is counted as authorised absence. However, we understand that in some instances children have medical needs that result in regular medical appointments, many of which require timing that is out of the control of parents and carers. In such circumstances, for the internal regular monitoring of attendance, such instances (Code M) will be disaggregated from the attendance data.

Emergency procedures

The Executive Headteacher will ensure that arrangements are in place for dealing with emergencies for all school activities wherever they take place, including school trips within and outside the UK, as part of the general risk management process.

Where a child has an individual healthcare plan, this will clearly define what constitutes an emergency and explain what to do, including ensuring that all relevant staff are aware of emergency symptoms and procedures. Other pupils in the school should know what to do in general terms, such as informing a teacher immediately if they think help is needed.

If a child needs to be taken to hospital, staff should stay with the child until the parent arrives, or accompany a child taken to hospital by ambulance.

Day trips, residential visits, and sporting activities

We will actively support pupils with medical condition to participate in day trips, residential visits and sporting activities by being flexible and making reasonable adjustments unless there is evidence from a clinician such as a GP that this is not possible.

We will always conduct a risk assessment so that planning arrangements take account of any steps needed to ensure that pupils with medical conditions can be included safely. This will involve consultation with parents\carers and relevant healthcare professions and will be informed by Health and Safety Executive (HSE) guidance on school trips.

Other issues for consideration

Where a pupil uses home-to-school transport arranged by the LA and they also have a medical condition which is life-threatening, we will share the pupil's individual healthcare plan with the Local Authority/transport provider.

Unacceptable practice

Although staff at Acton and Calveley should use their discretion and judge each case on its merit with reference to the child's individual healthcare plan, it is not generally acceptable practice to:

Real Life Learning Academy Trust

- Prevent children from easily accessing their inhalers and medication and administering their medication when and where necessary;
- Assume that every child with the same condition requires the same treatment;
- Ignore the views of the child or their parents\carers; or ignore medical evidence or opinion (although this may be challenged);
- Send children with medical conditions home frequently or prevent them from staying for normal school activities, including lunch, unless this is specified in their individual healthcare plans;
- send a child who becomes ill to the school office or medical room unaccompanied;
- Penalise children for their attendance record if their absences are related to their medical condition, e.g. hospital appointments;
- Prevent pupils from drinking, eating or taking toilet breaks whenever they need to in order to manage their medical condition effectively;
- Require parents\carers, or otherwise make them feel obliged, to attend school to administer medication or provide medical support to their child, including with toileting issues. No parent should have to give up working because the school is failing to support their child's medical needs; or
- Prevent children from participating, or creating unnecessary barriers to children participating in any aspect of school life, including school trips, e.g. by requiring parents to accompany the child.

Complaints

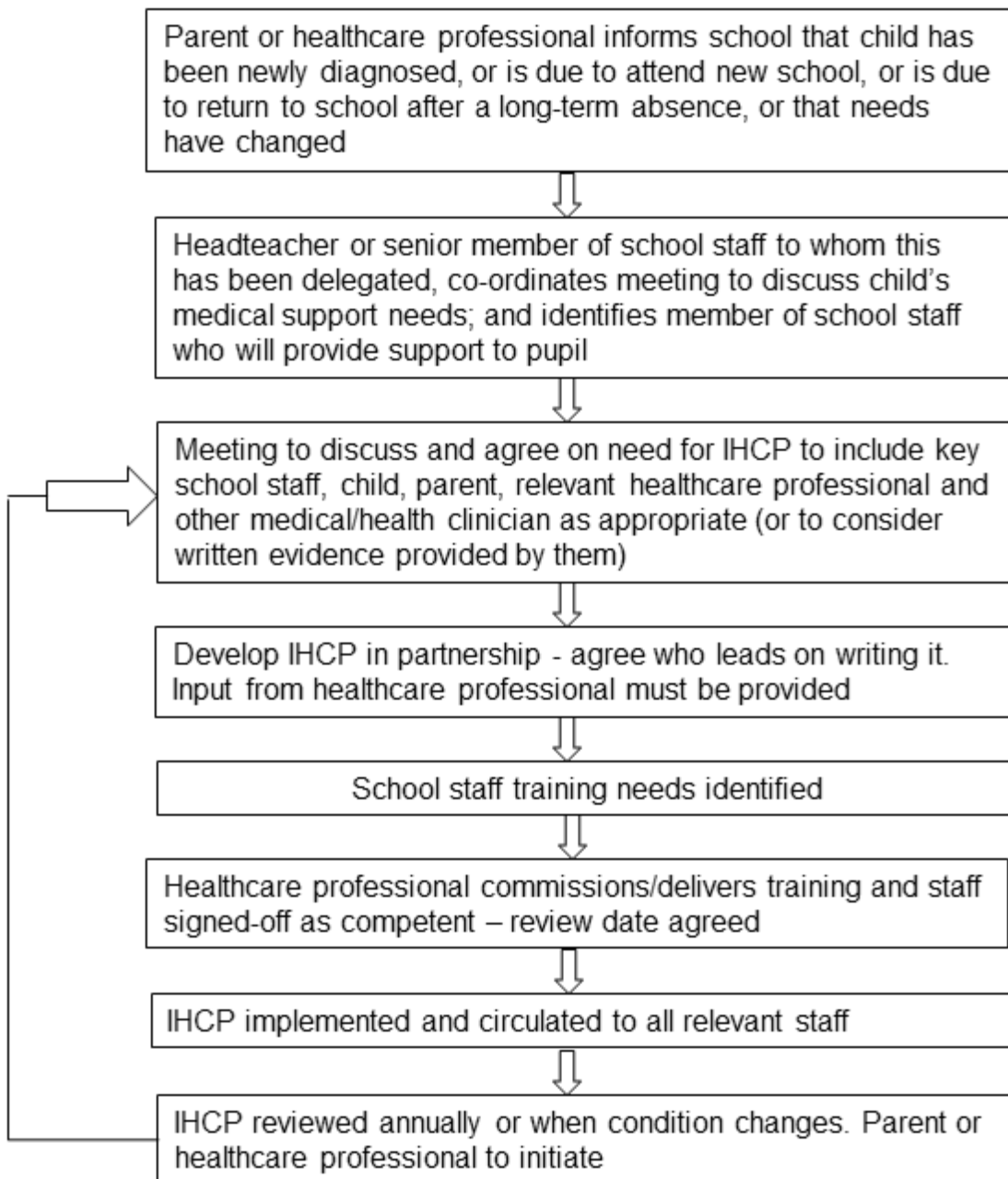
Should parents\carers be unhappy with any aspect of their child's care at Acton or Calveley, they must discuss their concerns with the schools. This will be with the child's class teacher/form tutor in the first instance, with whom any issues should be addressed. If this does not resolve the problem or allay the concern, the problem should be brought to a member of the senior leadership team, who will, where necessary, bring concerns to the attention of the Headteacher. In the unlikely event of this not resolving the issue, the parent\carer must make a formal complaint using the Complaints Procedure.

Review

This policy and its associated procedures will be reviewed every 2 years.

Last updated October 2018

Annex A: Process for developing individual healthcare plans



Template A: Individual Healthcare Plan

Name of school/setting

Child's name

Group/class/form

Date of birth

Child's address

Medical diagnosis or condition

Date

Review date

Family Contact Information

Name

Phone no. (work)

(home)

(mobile)

Name

Relationship to child

Phone no. (work)

(home)

(mobile)

Clinic/Hospital Contact

Name

Phone no.

G.P.

Name

Phone no.

Who is responsible for providing support in school

--

Describe medical needs and give details of child's symptoms, triggers, signs, treatments, facilities, equipment or devices, environmental issues etc.

--

Real Life Learning Academy Trust

Name of medication, dose, method of administration, when to be taken, side effects, contra-
indications, administered by/self-administered with/without supervision

Daily care requirements

Specific support for the pupil's educational, social and emotional needs

Arrangements for school visits/trips etc

Other information

Describe what constitutes an emergency, and the action to take if this occurs

Who is responsible in an emergency (*state if different for off-site activities*)

Plan developed with

Staff training needed/undertaken – who, what, when

Form copied to

Template B: Parental Agreement for Setting to Administer Medicine

The school/setting will not give your child medicine unless you complete and sign this form, and the school or setting has a policy that the staff can administer medicine.

Date for review to be initiated by	
Name of school/setting	
Name of child	
Date of birth	
Group/class/form	
Medical condition or illness	

Medicine

Name/type of medicine <i>(as described on the container)</i>	
Expiry date	
Dosage and method	
Timing	
Special precautions/other instructions	
Are there any side effects that the school/setting needs to know about?	
Self-administration – y/n	
Procedures to take in an emergency	

NB: Medicines must be in the original container as dispensed by the pharmacy

Contact Details

Name	
Daytime telephone no.	
Relationship to child	
Address	
I understand that I must deliver the medicine personally to	[agreed member of staff]

The above information is, to the best of my knowledge, accurate at the time of writing and I give consent to school/setting staff administering medicine in accordance with the school/setting policy. I will inform the school/setting immediately, in writing, if there is any change in dosage or frequency of the medication or if the medicine is stopped.

Signature(s) _____

Date _____

Template C: Record of Medicine Administered to an Individual Child

Name of school/setting	
Name of child	
Date medicine provided by parent	
Group/class/form	
Quantity received	
Name and strength of medicine	
Expiry date	
Quantity returned	
Dose and frequency of medicine	

Staff signature _____

Signature of parent _____

Date			
Time given			
Name on medication checked			
Name of medication administered			
Dose Given			
Any Reactions			
Name of member of staff (printed)			
Staff Signature			

Real Life Learning Academy Trust

Staff Signature

--	--	--

Date

--	--	--

Time given

--	--	--

Name on medication checked

--	--	--

Name of medication administered

--	--	--

Dose Given

--	--	--

Any Reactions

--	--	--

Name of member of staff (printed)

--	--	--

Staff Signature

--	--	--

Template D: Staff Training Record – Administration of Medicines and/or Medical Procedures

Name of school/setting

Name

Type of training received

Date of training completed

Training provided by

Profession and title

I confirm that [name of member of staff] has received the training detailed above and is competent to carry out any necessary treatment. I recommend that the training is updated [name of member of staff].

Trainer's signature _____

Date _____

I confirm that I have received the training detailed above.

Staff signature _____

Date _____

Suggested review date _____